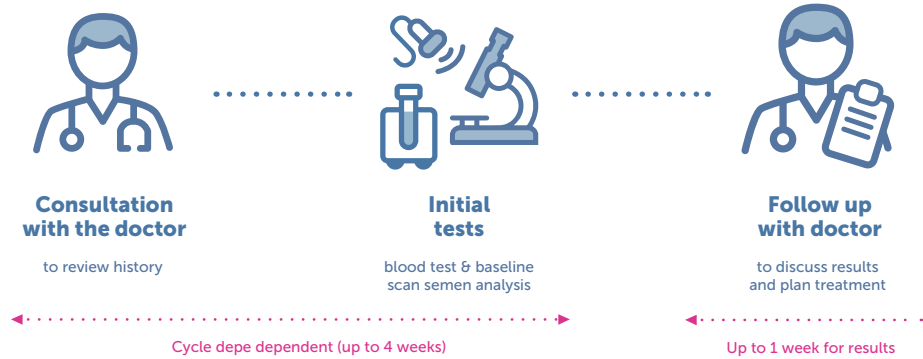
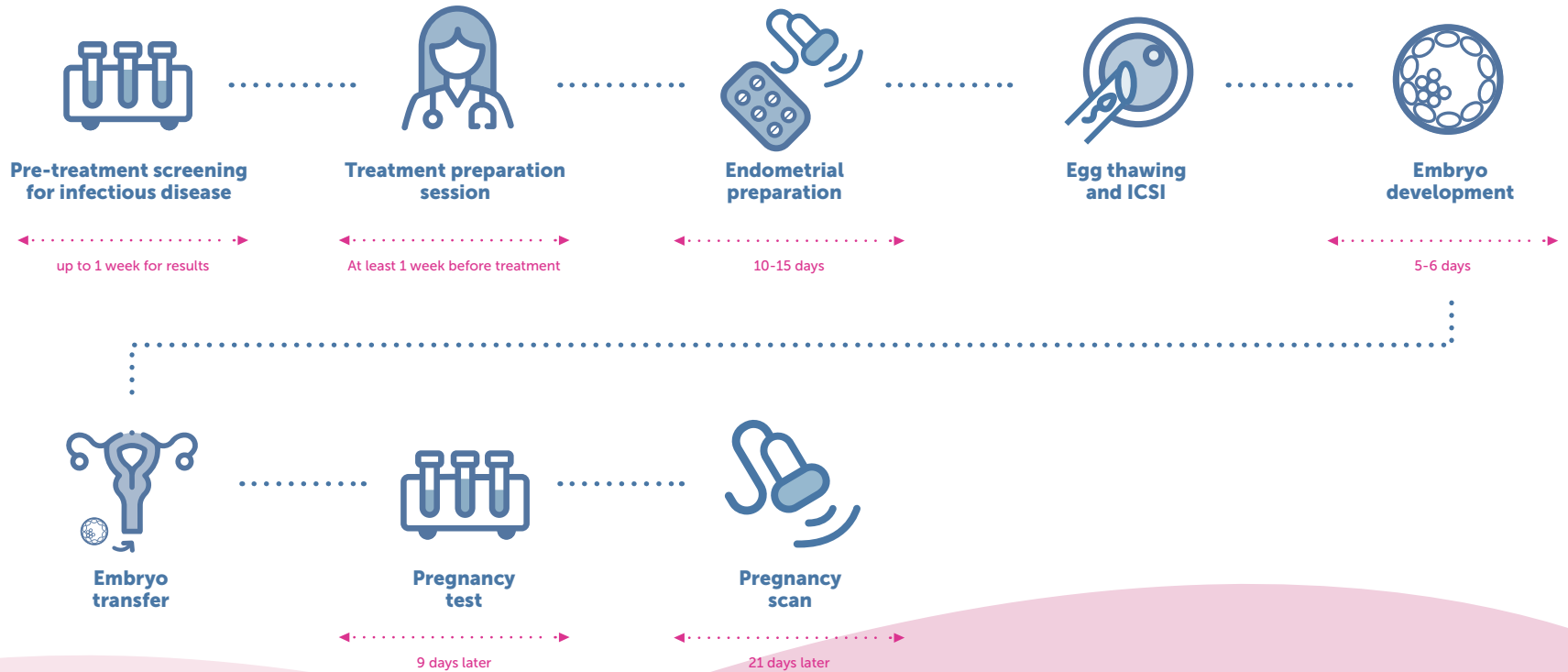


# Egg Thawing

## Stage 1: Assessment



## Stage 2: Egg Thawing & Transfer



# Egg Thawing

## Price list

Screening Tests		
<b>Female screening tests</b>	(P10: female screen: Chlamydia, Gonorrhoea, FBC, Hep B sAg, Hep B core, Hep C, HIV, HVS, Rubella)	<b>£250</b>
<b>Male screening tests</b>	(P11: male screen: Chlamydia, Gonorrhoea, Hep B sAg, Hep B core, Hep C, HIV, Semen culture)	<b>£150</b>

Egg Thawing and ICSI Cycle with Fresh Transfer		
<p>Treatment preparation session; Monitoring ultrasound scans and blood tests during stimulation; HFEA fees; Thawing of eggs; Sperm preparation and fertilisation of eggs by ICSI;</p> <p>Advanced embryology: Embryo culture to day 6, Timelapse embryo culture (Embryoscope®), Embryo assessment and selection by AI (Fairtility), Laser assisted hatching of embryos (if required);</p> <p>Fertility support (elective, 2 sessions); Embryo transfer with Embryoglu®; 1x Progesterone test, 1x pregnancy test, 1x early pregnancy scan; Review consultation</p>		<b>£4,600</b>
<b>Medications</b>	estimate as above	<b>£1,000</b>

Egg Thawing and ICSI Cycle - Freeze All		
<p>Treatment preparation session; HFEA fees; Thawing of eggs; Sperm preparation and fertilisation of eggs by ICSI;</p> <p>Advanced embryology: Embryo culture to day 6, Timelapse embryo culture (Embryoscope®), Embryo assessment and selection by AI (Fairtility), Laser assisted hatching of embryos (if required);</p> <p>Embryo freezing by vitrification Review consultation</p>		<b>£3,800</b>

# Egg Thawing

## Price list extras

<b>Cervical smear</b>	<b>£150</b>
<b>Thalassaemia screen</b>	<b>£60</b>
<b>Zika antibodies</b>	<b>£200</b>
<b>Follow up consultation</b>	<b>£190</b>
<b>Elective sedation</b>	<b>£400</b>
<b>Intracytoplasmic Morphologically Selected sperm Injection (IMSI) (in addition to ICSI)</b>	<b>£500</b>
<b>Endometrial scratch &amp; saline hysteroqram</b>	<b>£350</b>
<b>Cryogenic storage of embryos</b> per annum	<b>£360</b>

## Terms & notes

©Harley Street Fertility Clinic Ltd 2023

Director: Dr Geetha Venkat MD, FRCOG  
e: [info@hsfc.org.uk](mailto:info@hsfc.org.uk) t: +44 (0) 20 7436 6838  
[www.hsfc.org.uk](http://www.hsfc.org.uk)  
Registered in England No. 7239845  
Registered office: 134 Harley Street, London W1G 7JY

1. Abandoned egg thawing cycles: cycles abandoned prior to egg thawing will be billed for monitoring scans and blood tests plus a £300 cycle admin fee; at egg thawing, if there are no eggs for ICSI, a £1,000 credit will be issued; if ICSI is performed but there are no embryos for transfer or freezing, a credit of £400 will be issued.
2. If you are late to a monitoring scan appointment by 15 minutes or more, you will need to rebook the appointment and pay the scan fee of £200.
3. If your cycle requires replanning, there will be a £100 charge.
4. Payment terms: treatment charges are due by 1st treatment scan. All other charges are payable upon presentation.

This price list is effective from 1 July 2024, serves for information purpose only and should not be treated as a formal service agreement. The above figures are intended as a guide and are subject to change without notice.

**Refer a friend and you will both receive £100 credit on your account.**