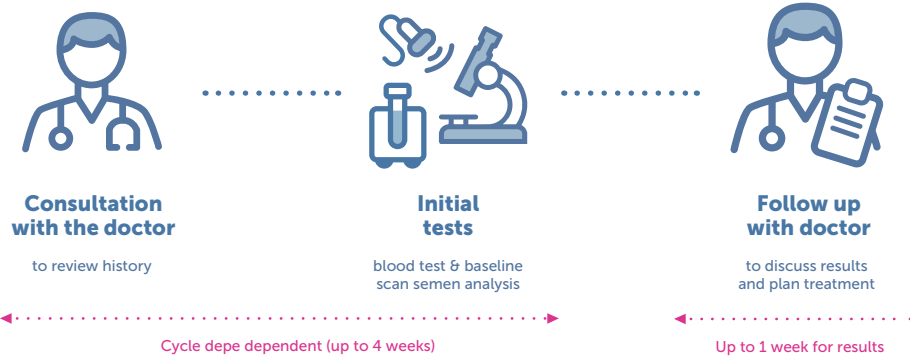
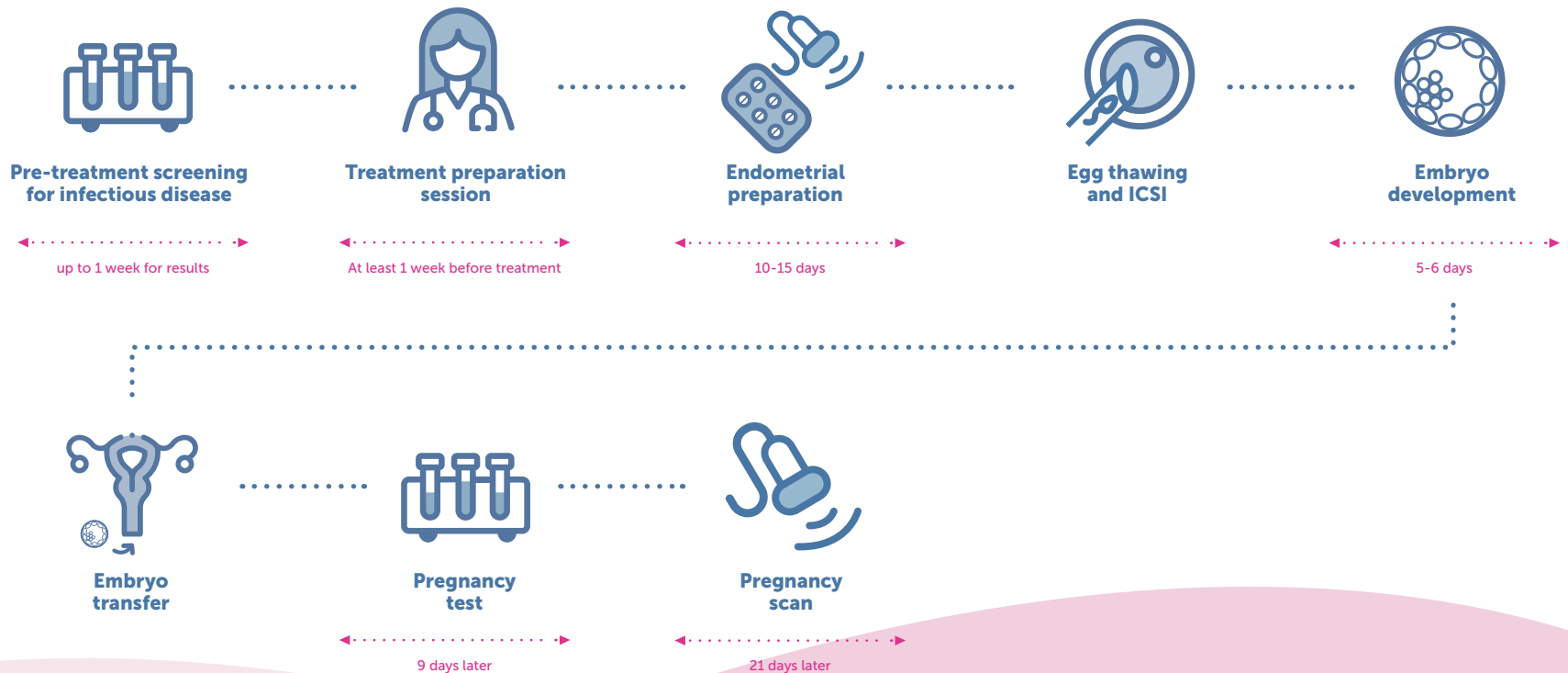


Egg Thawing

Stage 1: Assessment



Stage 2: Egg Thawing & Transfer



Egg Thawing

Price list

Screening Tests		
Female screening tests	(P10: female screen: Chlamydia, Gonorrhoea, FBC, Hep B sAg, Hep B core, Hep C, HIV, HVS, Rubella)	£250
Male screening tests	(P11: male screen: Chlamydia, Gonorrhoea, Hep B sAg, Hep B core, Hep C, HIV, Semen culture)	£150

Egg Thawing and ICSI Cycle with Fresh Transfer		
Treatment preparation session; Monitoring ultrasound scans and blood tests during stimulation; HFEA fees; Thawing of eggs; Sperm preparation and fertilisation of eggs by ICSI; Advanced embryology: Embryo culture to day 6, Timelapse embryo culture (Embryoscope®), Embryo assessment and selection by AI (Fairtility), Laser assisted hatching of embryos (if required); Fertility support (elective, 2 sessions); Embryo transfer with Embryoglu®; 1x Progesterone test, 1x pregnancy test, 1x early pregnancy scan; Review consultation		£4,600
Medications	estimate as above	£1,000

Egg Thawing and ICSI Cycle - Freeze All		
Treatment preparation session; HFEA fees; Thawing of eggs; Sperm preparation and fertilisation of eggs by ICSI; Advanced embryology: Embryo culture to day 6, Timelapse embryo culture (Embryoscope®), Embryo assessment and selection by AI (Fairtility), Laser assisted hatching of embryos (if required); Embryo freezing by vitrification Review consultation		£3,800

Egg Thawing

Price list extras

Cervical smear	£150
Thalassaemia screen	£60
Zika antibodies	£200
Follow up consultation	£190
Elective sedation	£400
Intracytoplasmic Morphologically Selected sperm Injection (IMSI) (in addition to ICSI)	£500
Endometrial scratch & saline hysteroqram	£350
Cryogenic storage of embryos per annum	£360

Terms & notes

©Harley Street Fertility Clinic Ltd 2023

Director: Dr Geetha Venkat MD, FRCOG
e: info@hsfc.org.uk t: +44 (0) 20 7436 6838
www.hsfc.org.uk
Registered in England No. 7239845
Registered office: 134 Harley Street, London W1G 7JY

1. Abandoned egg thawing cycles: cycles abandoned prior to egg thawing will be billed for monitoring scans and blood tests plus a £300 cycle admin fee; at egg thawing, if there are no eggs for ICSI, a £1,000 credit will be issued; if ICSI is performed but there are no embryos for transfer or freezing, a credit of £400 will be issued.
2. If you are late to a monitoring scan appointment by 15 minutes or more, you will need to rebook the appointment and pay the scan fee of £200.
3. If your cycle requires replanning, there will be a £100 charge.
4. Payment terms: treatment charges are due by 1st treatment scan. All other charges are payable upon presentation.

This price list is effective from 1 July 2024, serves for information purpose only and should not be treated as a formal service agreement. The above figures are intended as a guide and are subject to change without notice.

Refer a friend and you will both receive £100 credit on your account.