

IVF with Donor Eggs

Stage 1: Fertility Check-Up



Consultation with the doctor

to review history



Initial tests

blood test (P22) & baseline scan
semen analysis



Follow up with doctor

to discuss results
and treatment



Cycle dependent (up to 4 weeks)



Up to 1 week for results

Stage 2: Preparing For Treatment

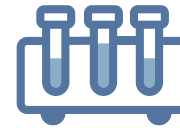


Implications counselling, Screening for CMV & blood group

Up to 1 week for results



Donor selection



Immunology testing (optional)

2 weeks



Mock cycle

2-3 weeks



Follow up with doctor

to plan treatment

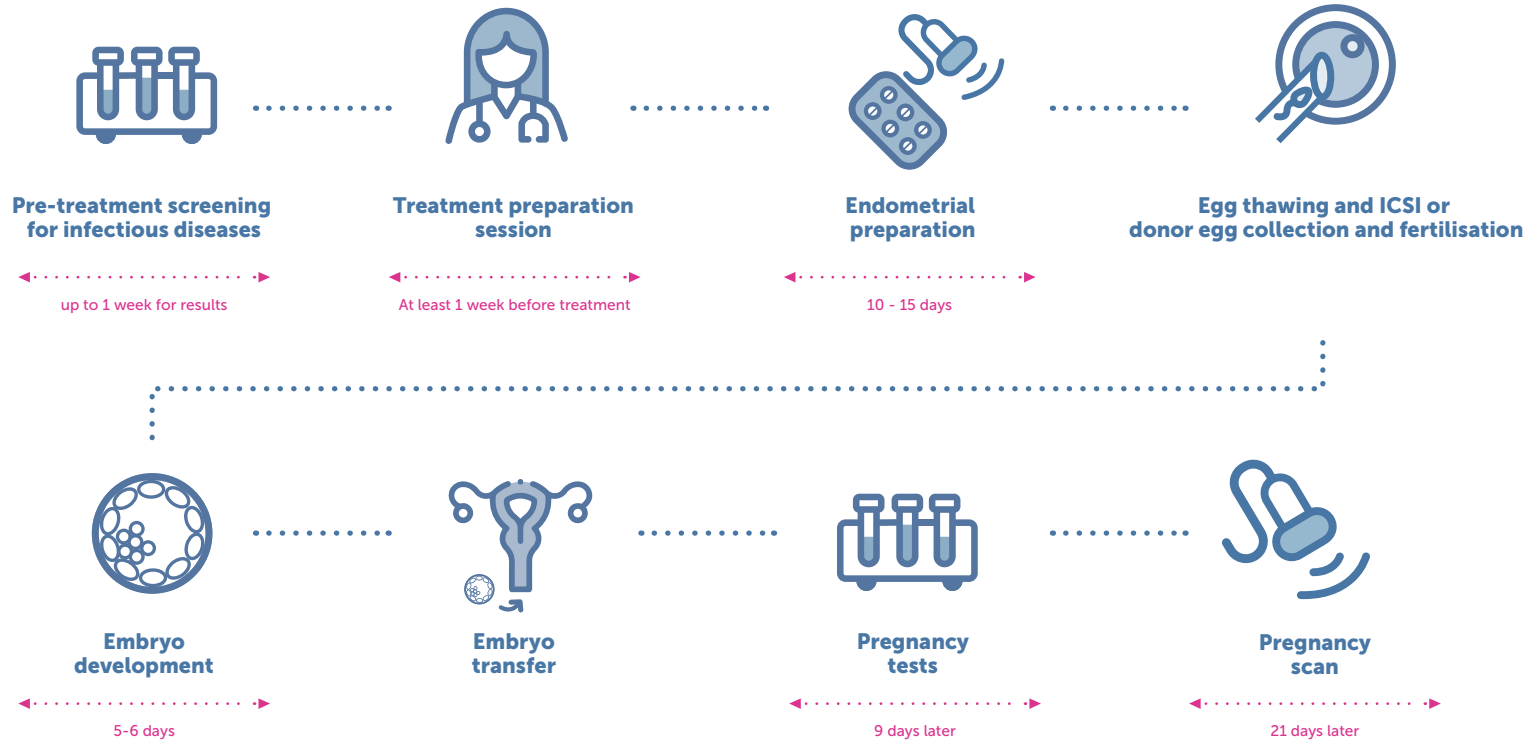


Endometrial scratch & saline hysteroqram*

7-10 days prior to
treatment start

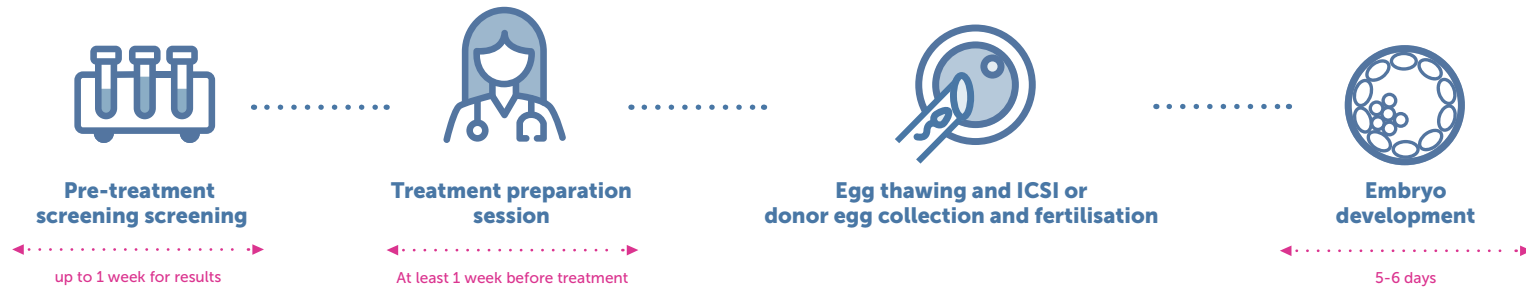
IVF with Donor Eggs

Option 1
Stage 3:
IVF Cycle
with a Fresh
Transfer

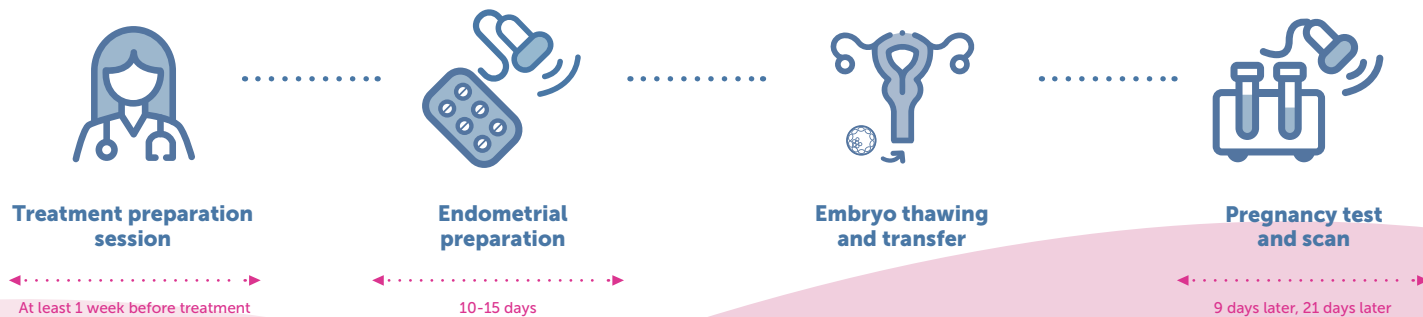


IVF with Donor Eggs

Option 2 Stage 3: Embryo Freezing + PGT-A



Followed by Frozen Embryo Transfer



IVF with Donor Eggs

Price list

Stages 1 & 2

| Preparing For Treatment | | |
|--|---|------------------------------|
| Supplementary blood tests | thyroid profile, vitamin D and prolactin (P22) | £140 |
| Pelvic ultrasound scan | | £200 |
| Implications counselling | | £120 |
| CMV and blood group screening | | £100 |
| Mock cycle | includes saline infusion scan, excludes medications | £600 |
| Immunology testing* | Thrombotic risk profile and auto-antibodies (P08) Natural killer cell assay panel and TH1:TH2 cytokine ratio | £900 £1,000 |
| Endometrial scratch and saline hysteroqram* | | £350 |
| * optional | | |
| Preparing For Treatment | | |
| Female screening tests | (P10: female screen: Chlamydia, Gonorrhoea, FBC, Hep B sAg, Hep B core, Hep C, HIV, HVS, Rubella) | £250 |
| Male screening tests | (P11: male screen: Chlamydia, Gonorrhoea, Hep B sAg, Hep B core, Hep C, HIV, Semen culture) | £150 |

Refer a friend and you will both receive £100 credit on your account.

IVF with Donor Eggs

Stage 3

Option 1 Fresh Transfer

| IVF Cycle with Donor Eggs | | |
|--|--|----------------|
| <p>Pre-treatment assessment of donor; Ovarian stimulation for donor, including medications and monitoring; Egg collection for donor, including sedation for egg collection; Treatment preparation session; synchronisation of cycles (if required) Monitoring ultrasound scans and blood tests during stimulation; HFEA fees Fertility support (elective, 2 sessions) Sperm preparation and fertilisation of eggs by IVF (ICSI is included if using frozen eggs); Timelapse embryo culture (Embryoscope®), Embryo assessment and selection by AI (CHLOE) Embryo culture to day 6; Embryo transfer, including Embryoglu® 1x progesterone test, 1x pregnancy test, 1x early pregnancy scan Review consultation</p> <p>Treatment options:</p> | | |
| Frozen eggs from Harley Street Egg Bank, 8 - 10 mature eggs | | £11,000 |
| Frozen eggs from Harley Street Egg Bank, large cohort 11 - 15 mature eggs | | £14,000 |
| Supplementary cohort of eggs (5 - 10 mature eggs) | | £8,000 |
| Fresh eggs, regular cohort: 5-10 fresh eggs | | £11,000 |
| Fresh eggs, large cohort: 11-15 fresh eggs | | £14,000 |
| Medications | This an estimate of medications costs, as each patient will require a different amount of medications. Please refer to our medications price lists for details | £1,000 |

IVF with Donor Eggs

Stage 3

Option 2 Embryo Freezing + PGT-A

| Embryo Freezing Cycle with Donor Eggs | |
|---|----------------|
| <p>Pre-treatment assessment of donor; Ovarian stimulation for donor, including medications and monitoring; Egg collection for donor, including sedation for egg collection; Fertility support (elective, 2 sessions) Sperm preparation and fertilisation of eggs by IVF (ICSI is included if using frozen eggs); Timelapse embryo culture (Embryoscope®), Embryo assessment and selection by AI (CHLOE) Embryo culture to day 6; Embryo freezing (excludes storage) Review consultation</p> <p>Treatment options:</p> | |
| Frozen eggs from Harley Street Egg Bank, 8 - 10 mature eggs | £11,000 |
| Frozen eggs from Harley Street Egg Bank, large cohort 11 - 15 mature eggs | £14,000 |
| Supplementary cohort of frozen eggs (5 - 10 mature eggs) | £8,000 |
| Fresh eggs, regular cohort: 5-10 fresh eggs | £11,000 |
| Fresh eggs, large cohort: 11-15 fresh eggs | £14,000 |
| PGT-A Testing for up to two embryos, additional embryos charged at £400 per embryo | £1,200 |

Followed by Frozen Embryo Transfer

| Frozen Embryo Transfer Cycle | |
|--|---------------|
| <p>Treatment preparation session; Monitoring ultrasound scans and blood tests during treatment; HFEA fees Thawing of embryos and embryo culture Advanced embryology [Embryogluo®, Embryoscope®]; Embryo transfer Acupuncture (elective, 1 session), Fertility support (elective, 2 sessions) 1x Progesterone test, 1x pregnancy test, 1x early pregnancy scan; Review consultation</p> | £2,050 |
| Medications estimate as above | £1,000 |

IVF with Donor Eggs

Price list extras

| | |
|---|---------------|
| Cervical smear | £150 |
| IntraCytoplasmic Sperm Injection (ICSI) | £1,350 |
| Intracytoplasmic Morphologically Selected sperm injection (IMSI) | £1,850 |
| Thalassaemia screen | £60 |
| Zika antibodies | £200 |
| Follow up consultation | £190 |
| Endometrial scratch and saline hysteroqram | £350 |
| Elective sedation | £400 |
| Cryogenic storage of embryos per annum | £360 |
| Ethics committee review | £250 |

©Harley Street Fertility Clinic Ltd 2023

Director: Dr Geetha Venkat MD, FRCOG
e: info@hsfc.org.uk t: +44 (0) 20 7436 6838
www.hsfc.org.uk
Registered in England No. 7239845
Registered office: 134 Harley Street,
London W1G 7JY

Terms & notes

1. A deposit of £2,500 is due when you choose a particular donor in order to reserve that donor
2. You have a 14 day cooling off period (from the date of signing the donor acceptance form) during which you may change your mind and obtain a full refund. Should you change your mind after the cooling off period, your deposit will not be refunded. You waive the right to the above cooling off period if you accept a donor within 14 days of the intended date of the donor starting stimulation.
3. The full treatment charge must be settled when your treatment plan is issued.
4. If a cycle requires replanning, there will be a £100 charge.
5. If your donor withdraws from treatment, your treatment charge will be refunded in full and you will be charged for the monitoring scans and blood tests you have had per our current prices
6. Should you decided to withdraw from treatment after the donor has commenced stimulation, there will be a £5000 treatment cancellation charge (including the deposit)
7. If you do not receive at least the minimum guaranteed number of eggs, your treatment charge will be refunded in full and you will be charged for the monitoring scans and blood tests you have had per our current prices
8. Cycles abandoned prior to embryo transfer will be billed for monitoring scans and blood tests plus a £300 cycle admin fee;
9. If you are late to a monitoring scan appointment by 15 minutes or more, you will need to rebook the appointment and pay the scan fee of £200.

at embryo transfer, if there are no embryos for transfer we regret no credit will be issued.

This price list is effective from 1 July 2024, serves for information purpose only and should not be treated as a formal service agreement. The above figures are intended as a guide and are subject to change without notice.