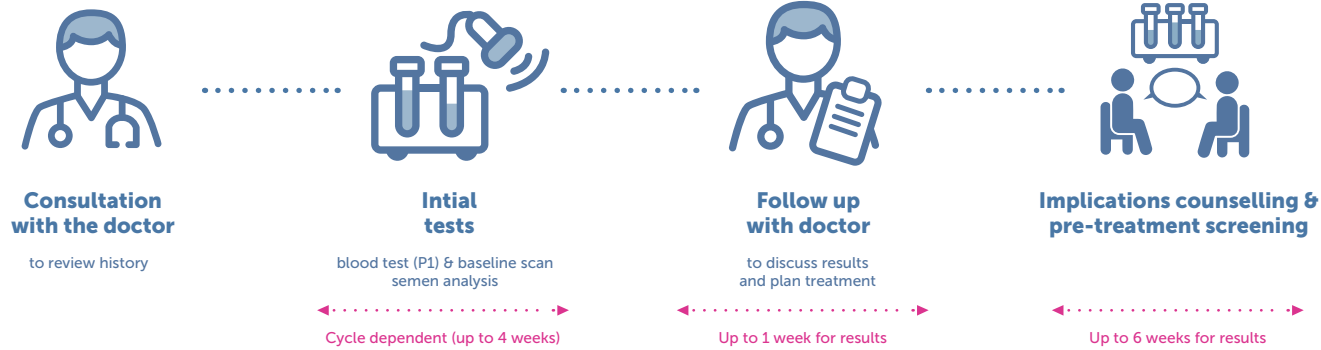
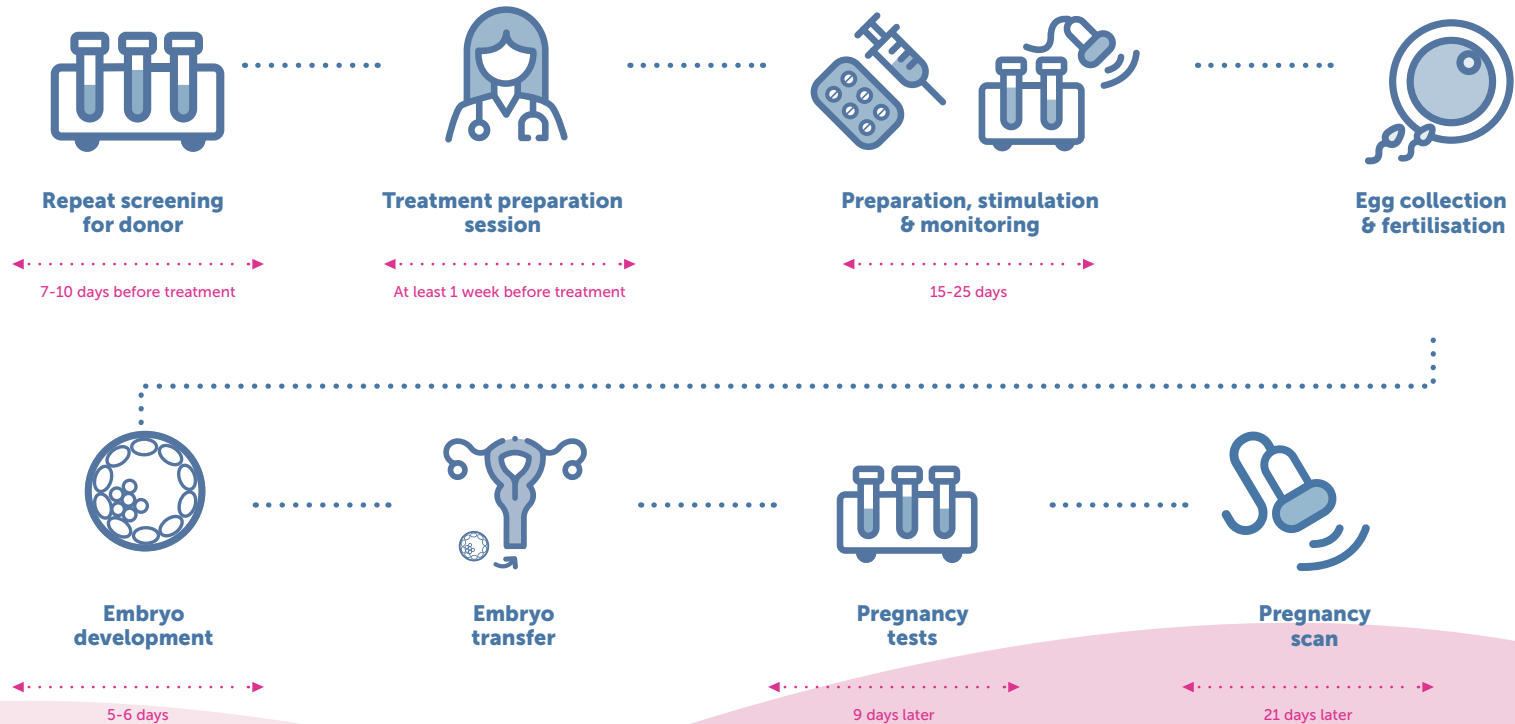


# Reciprocal IVF

## Stage 1: Fertility Check-Up

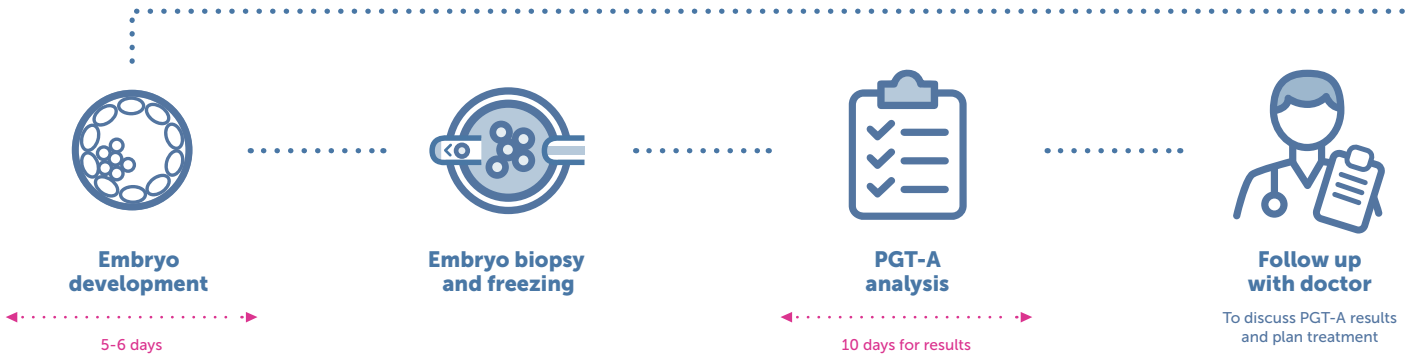
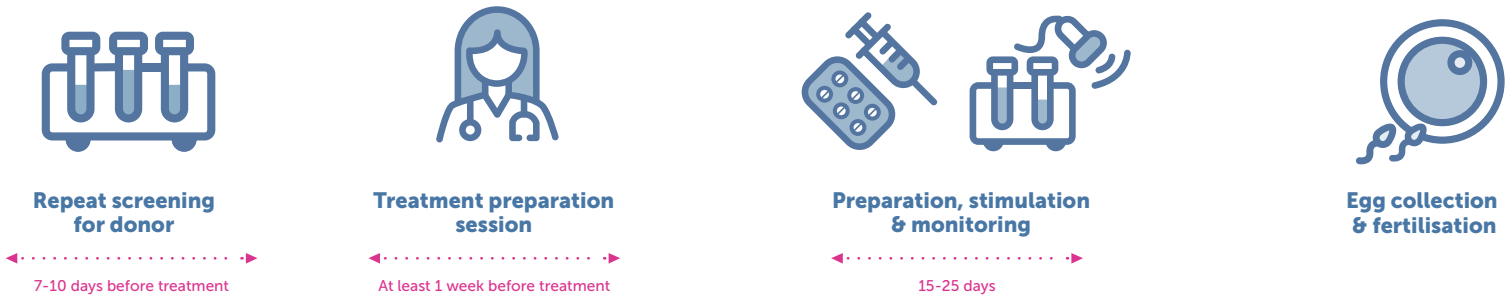


## Option 1 IVF with a Fresh Transfer

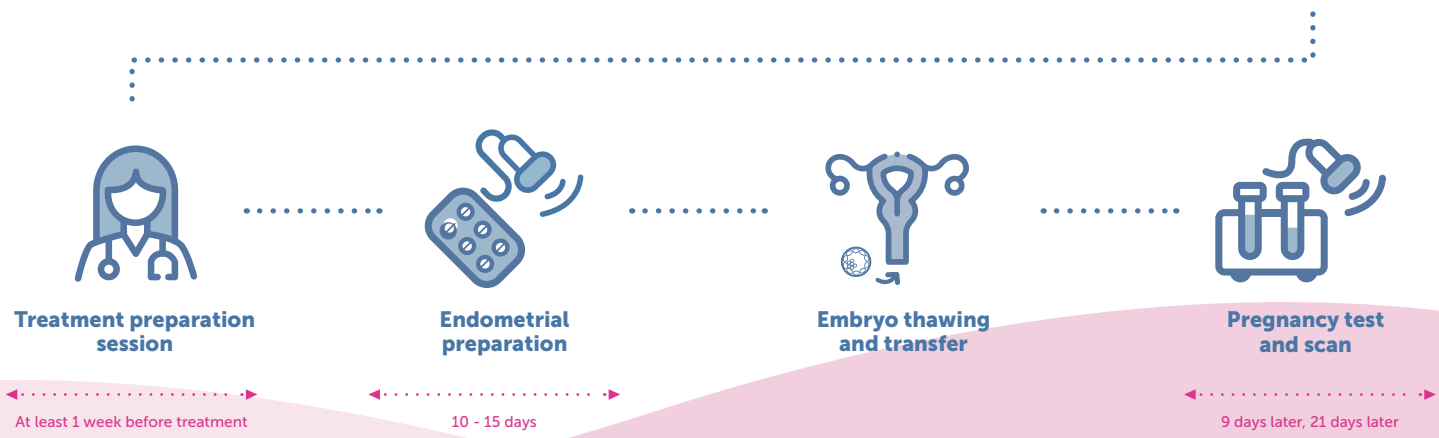


# Reciprocal IVF

## Embryo Freezing + PGT-A



## Followed by Frozen Embryo Transfer



# Reciprocal IVF

## Price list

<b>Implications counselling for donating partner</b>	<b>£120</b>
<b>Implications counselling for receiving partner</b>	<b>£120</b>
<b>Matching tests for receiving partner</b> (CMV, Blood group)	<b>£100</b>
<b>Screening Tests</b>	
<b>Screening tests for donating partner</b> (P13: donor screen)	<b>£800</b>
<b>Repeat viral screening tests for donating partner</b> (P17: NAT screen)	<b>£400</b>
<b>Screening tests for receiving partner</b> (P10: female screen: Chlamydia, Gonorrhoea, FBC, Hep B sAg, Hep B core, Hep C, HIV, HVS, Rubella)	<b>£250</b>
<b>Option 1: IVF Cycle with Fresh Transfer</b>	
Treatment preparation session; Monitoring ultrasound scans and blood tests during stimulation; HFEA fees Egg collection and, sedation for egg collection; Sperm preparation and fertilisation of eggs; Embryo culture to day 6; Laser assisted hatching of embryos (if required); Timelapse embryo culture (Embryoscope®), Embryo assessment and selection by AI (CHLOE) Fertility support (elective, 2 sessions) Embryo transfer with Embryoglu® 1x Progesterone test, 1x pregnancy test, 1x early pregnancy scan; Review consultation	<b>£5,450</b>
<b>Medications for donating partner</b> This an estimate of medications costs, as each patient will require a different amount of medications. Please refer to our medications price lists for details.	<b>£800 - £2,000</b>
Nurse consultation for receiving partner; synchronisation of cycle with donating partner; Monitoring scans and blood tests during cycle for receiving partner	<b>£800</b>
<b>Medications for receiving partner</b> Estimate as above	<b>£1,000</b>

# Reciprocal IVF

## Price list

Option 2: Embryo Freezing Cycle		
Treatment preparation session; Monitoring ultrasound scans and blood tests during stimulation; HFEA fees Egg collection and, sedation for egg collection; Sperm preparation and fertilisation of eggs; Embryo culture to day 6; Laser assisted hatching of embryos (if required); Timelapse embryo culture (Embryoscope®), Embryo assessment and selection by AI (CHLOE) Vitrification of embryos; Fertility support (elective, 2 sessions) Review consultation		<b>£5,450</b>
<b>Medications for donating partner</b>	estimate as above	<b>£800 - £2,500</b>
<b>PGT-A</b>	Testing for up to two embryos, additional embryos charged at £400 per embryo	<b>£1,000</b>
<b>Frozen embryo transfer cycle</b> Treatment preparation session; Monitoring ultrasound scans and blood tests during treatment; HFEA fees Thawing of embryos and embryo culture Embryo transfer with Embryoglu® Fertility support (elective, 2 sessions) 1x Progesterone test, 1x pregnancy test, 1x early pregnancy scan; Review consultation		<b>£2,050</b>
<b>Medications for treatment</b>	estimate as above	<b>£1,000</b>

**Refer a friend and you will both receive £100 credit on your account.**

# Reciprocal IVF

## Price list extras

<b>Cervical smear</b>	<b>£150</b>
<b>IntraCytoplasmic Sperm Injection (ICSI)</b>	<b>£1,350</b>
<b>Intracytoplasmic Morphologically Selected sperm injection (IMSI)</b>	<b>£1,850</b>
<b>Thalassaemia screen</b>	<b>£60</b>
<b>Zika antibodies</b>	<b>£200</b>
<b>Follow up consultation</b>	<b>£150</b>
<b>Endometrial scratch and saline hystrogram</b>	<b>£350</b>
<b>Elective sedation</b>	<b>£400</b>
<b>Cryogenic storage of embryos</b> (per annum, per batch of up to 10 embryos)	<b>£360</b>

## Terms & Notes

Please note that you will need to purchase donor sperm for this treatment. We advise all patients to purchase at least 2 ampoules of donor sperm for each cycle of treatment. HSFC offers a selection of donor sperm from our own catalogue and our charge for 2 ampoules is £900.

Please note that any donor sperm samples imported to the clinic will incur an administrative fee for the import process. Requirements for donor sperm to be used for treatment:

- All samples must be UK compliant (also referred to as ID disclosure)
- All samples must be graded suitable for IVF or IUI, i.e. not ICSI, generally these are called ICI grade
- Samples should be unwashed

We have an established relationship with the following donor sperm banks:

- Xytex (USA) – <http://www.xytex.com>
- European sperm bank (Denmark) – <http://www.europeanspermbank.com>
- Semovo (UK) – <https://www.buysperm.co.uk>

Should you wish to procure donor sperm from a different source, please speak to an embryologist to confirm that we will be willing to accept sperm samples from that supplier.

# Reciprocal IVF

## Terms and notes

1. Abandoned cycles:
  - a. ovarian stimulation cycles abandoned prior to egg collection will be billed for monitoring scans and blood tests plus a £300 cycle admin fee; at egg collection, if there are no eggs or failed fertilisation or no embryos to freeze, a credit of £400 will be issued
  - b. frozen embryo transfer cycles abandoned prior to embryo transfer will be billed for monitoring scans and blood tests plus a £300 cycle admin fee; at embryo transfer, if there are no embryos for transfer a credit of £400 will be issued.
2. Payment terms: treatment charges are due by 1st scan and all other charges are payable upon presentation.
3. If a cycle requires replanning, there will be a £100 charge.
4. If you are late to a monitoring scan appointment by 15 minutes or more, you will need to rebook the appointment and pay the scan fee of £200.

This price list is effective from 1 July 2023, serves for information purpose only and should not be treated as a formal service agreement. The above figures are intended as a guide and are subject to change without notice.

©Harley Street Fertility Clinic Ltd 2023

Director: Dr Geetha Venkat MD, FRCOG  
e: [info@hsfc.org.uk](mailto:info@hsfc.org.uk) t: +44 (0) 20 7436 6838  
[www.hsfc.org.uk](http://www.hsfc.org.uk)  
Registered in England No. 7239845  
Registered office: 134 Harley Street,  
London W1G 7JY